

PERSONAL LASER

Laser System



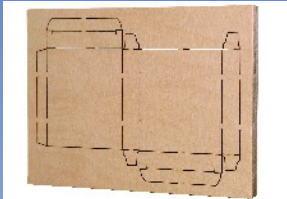
PERSONAL LASER - CO₂



LA TECNOLOGIA LASER ITALIANA NEL MONDO

COMPANY
WITH QUALITY MANAGEMENT
SYSTEM CERTIFIED BY DNV
=ISO 9001:2000=

PERSONAL LASER



SEI S.p.A. reserves the right to change the technical data and photos without any previous

Personal Laser (PL): is a compact and flexible flatbed laser system designed to cut sheet materials and to meet a wide range of the demands coming from different industrial fields such as die-making, wood and acrylic cutting.

Several options are available both for the working area and for the laser power and enable customers to design a system around their personal requirements.

The system provides excellent cutting quality over the full working area, additional features of the system are the stability and the high accuracy provided by the latest generation of controls. The sealed-off CO₂ laser source is literally maintenance-free, the beam delivery path has only one mirror producing a simple alignment with very little adjustment and maintenance.

Personal Laser (PL) is unique in its class and has now been accepted as an industry standard and the first choice for many

die-makers looking for a ground-breaking professional laser system that provides outstanding value of money. The PC control is Windows based and its proprietary ICARO Software accepts DXF, HPGL, CFF2 and DDS files.

Main features are:

- CO₂ water cooled sealed-off laser technology
- Very compact footprint compared to working area
- Programmable Z axis with optional surface follower
- Highly efficient fumes extraction system
- Working table with different work support
- Innovative interpolating SW based on cubic Sp-lines
- Programmable axis speed and acceleration.
- Interchangeable cutting Head with quick setting
- X, Y, Z motor strain control for anti-crash protection
- Easy to learn user interface (Win based) for a short learning curve.

TECHNICAL SPECIFICATIONS

Models	1520	1531	2031
Working area:	1550x2000	1550x3100	2000x3000 mm
Work support:	1650x2450	1650x3640	2100x3640 mm
Upright clearance:	1840	2020	2020 mm
Overall dimension WL*H:	3070x3720*x2100	3070x4920*x2100	3570x4920*x2100mm
Weight:	+2200	+2600	+3000 KG
Bridge clearance:		100 mm	
Working height (loading):		770 + 830 mm	
Payload:		80 Kg/m ²	
Z axis travel and height adjustment:		450 mm	
Sealed laser power:		115W + 2000 W	
Cutting head with optional focal lengths:	3,75" / 5" / 7,5" / 10"		
X-Y axis working Speed:	500 mm/s max.		
X-Y traverse and contour speed:	500 mm/s max		
Acceleration:	4 m./s ²		
X-Y-Z addressable resolution:	0,005 mm		
Accuracy:	+/- 0,05 mm on whole area		
Mean static repeatability:	+/- 0,02 mm		
Table flatness:	+/- 0,1 mm		
Control:	Microprocessor Pentium 4 2,4 GHz, TFT 12" LCD, 256Mb RAM, Floppy-Disk, CDRom, Keyboard, Trackball, Windows XP PRO, ICARO		
Interface:	N°1 Parallel port, n°1 serial port Rs232, N°1 USB port, n°1 Ethernet LAN 10/100Mbit/s, MODEM as option.		
Power supply:	380V +/- 10% (3ph+g+n) 50 Hz 11 KW + 70 KW		
Compressed air consumption:	100 nl/min. 6+8 bar (dust and oil free)		
Operating Temperature:	10+40° C		
Relative Operating Humidity:	10+85% RH max - non condensing		
Stocking temperature:	-10+70° C (circuit H ₂ O empty)		

*Over all Sizes: "L" + 250 mm

SEI S.p.A.

Via Ruffilli, 1 24035 Curno (BG) Italy tel. ++39 0354376016

fax ++39 035463843 <http://www.seilaser.com> e-mail: info@seilaser.com